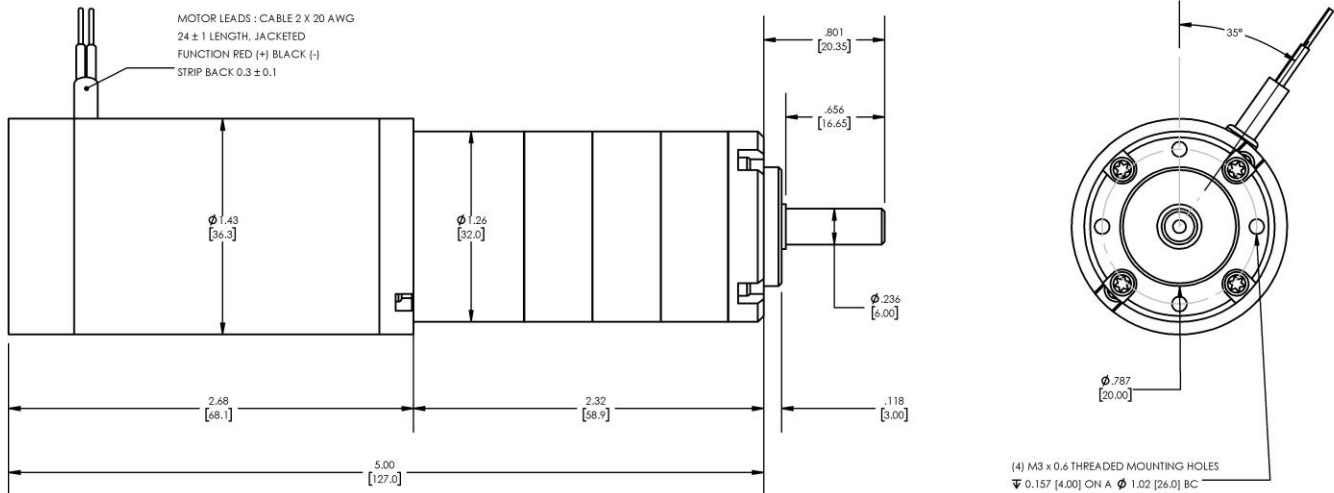


**Model Number:**
**MMP TM36-268A-12V GP32-100**


DIMENSIONS ARE INCHES [MM] UNLESS OTHERWISE STATED

PLANETARY GEARMOTOR OUTPUT PARAMETERS:	VALUE	UNITS	TOLERANCE
Gearhead Ratio (exact)	99.50 : 1		
Gearhead Shaft Output Speed (at full-load)	53	RPM	MAX
Gearmotor Rated Continuous Torque	7.8	In-Lbs	MAX
Gearmotor Rated Peak Torque	<b>33++</b>	In-Lbs	----
Gearhead Standard Backlash	96	Arc Minutes	MAX
Gearhead Efficiency	70%	----	----
Output Shaft Radial Load Capacity	23	Lbs	MAX
Output Shaft Axial Load Capacity	7	Lbs	MAX
Gearmotor Total Weight	1.2	Lbs	MAX

**++ All Peak Torque values are dependent upon duty. Contact our sales office for details.**

DC MOTOR PERFORMANCE PARAMETERS:	VALUE	UNITS	TOLERANCE
Rated DC Voltage	12	DC VOLTS	----
Rated Continuous Current	1.23	AMPERES	----
No-Load Speed	7059	RPM	MAX
Rated Speed	5280	RPM	+/- 15%
Rated Continuous Power Out	7	WATTS	+/- 15%
Rated Continuous Torque	1.8	OZ-IN	----
Peak Torque (motor only)	7.5	OZ-IN	----
No-Load Current	0.43	AMPERES	MAX
Back EMF Constant (Ke)	1.7	V/KRPM	+/- 10%
Torque Constant (Kt)	2.3	OZ-IN/AMP	+/- 10%
DC Armature Resistance	2.46	OHMS	+/- 15%
Armature Inductance	0.66	mH	+/- 15%
Armature temperature	155	DEG. C	MAX

**NOTES:**

- ENCODER & BRAKE OPTIONS AVAILABLE – [FOLLOW THIS LINK FOR DETAILS](#)
- NEMA MOUNTING FLANGE OPTION AVAILABLE – [FOLLOW THIS LINK FOR DETAILS](#)

# MIDWEST MOTION PRODUCTS

**DESIGN, MANUFACTURING & DISTRIBUTION - MOTION CONTROL EQUIPMENT**
[www.midwestmotion.com](http://www.midwestmotion.com)

 email: [sales@midwestmotion.com](mailto:sales@midwestmotion.com)